



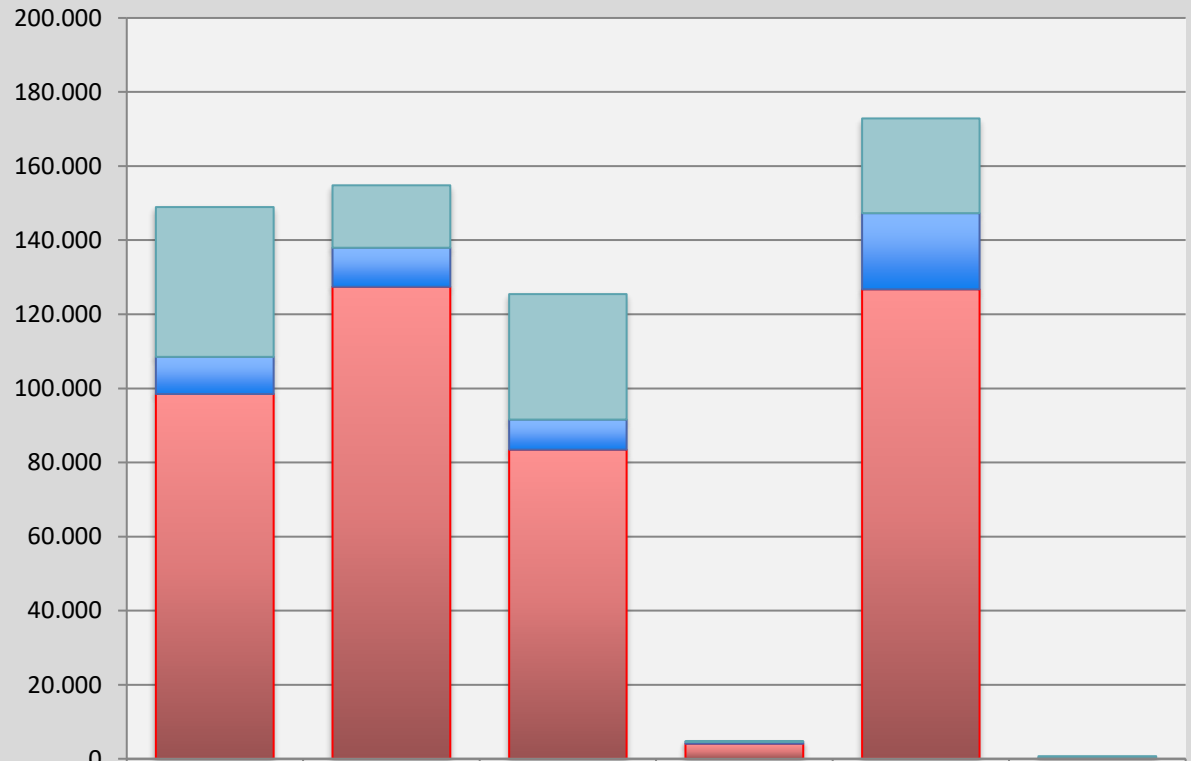
Verkfræðingafélag Íslands
Association of Chartered Engineers in Iceland

NordIng Statistics 2020

$$\Psi(x, t) = \psi(x) e^{-iEt/\hbar} = \sum_n c_n \psi_n(x) e^{-iE_n t/\hbar}$$



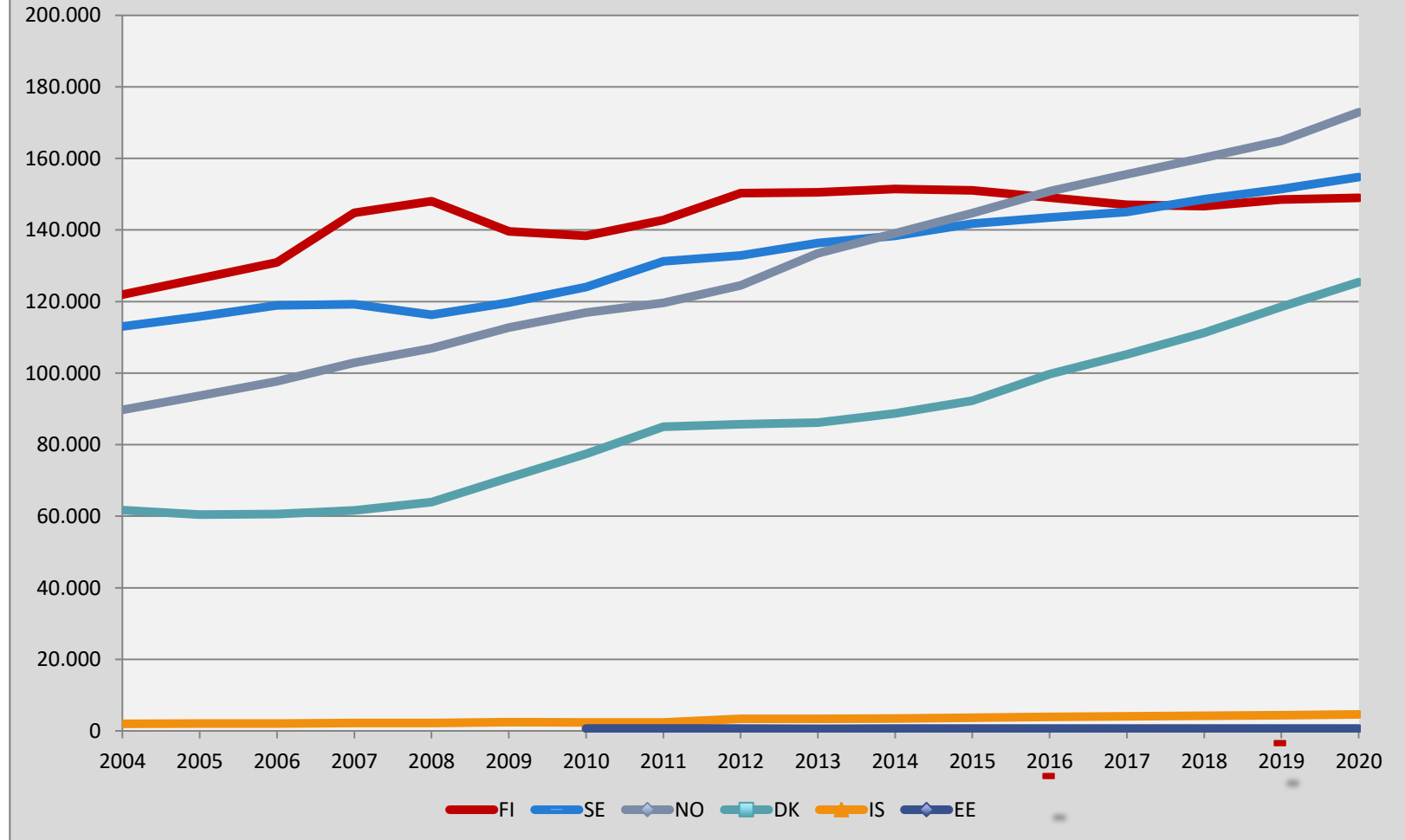
1. Nording members on January 1 2020



	Total FI	SvIng (SE)	IDA (DK)	VFI (IS)	Total NO	EIK (EE)
Number of student members	40.459	16.832	33.806	192	25.584	478
Number of members over age 65 or retired members	9.941	10.568	8.130	502	20.563	78
Number of members under age 65 or active members	98.533	127.429	83.498	4.130	126.724	153

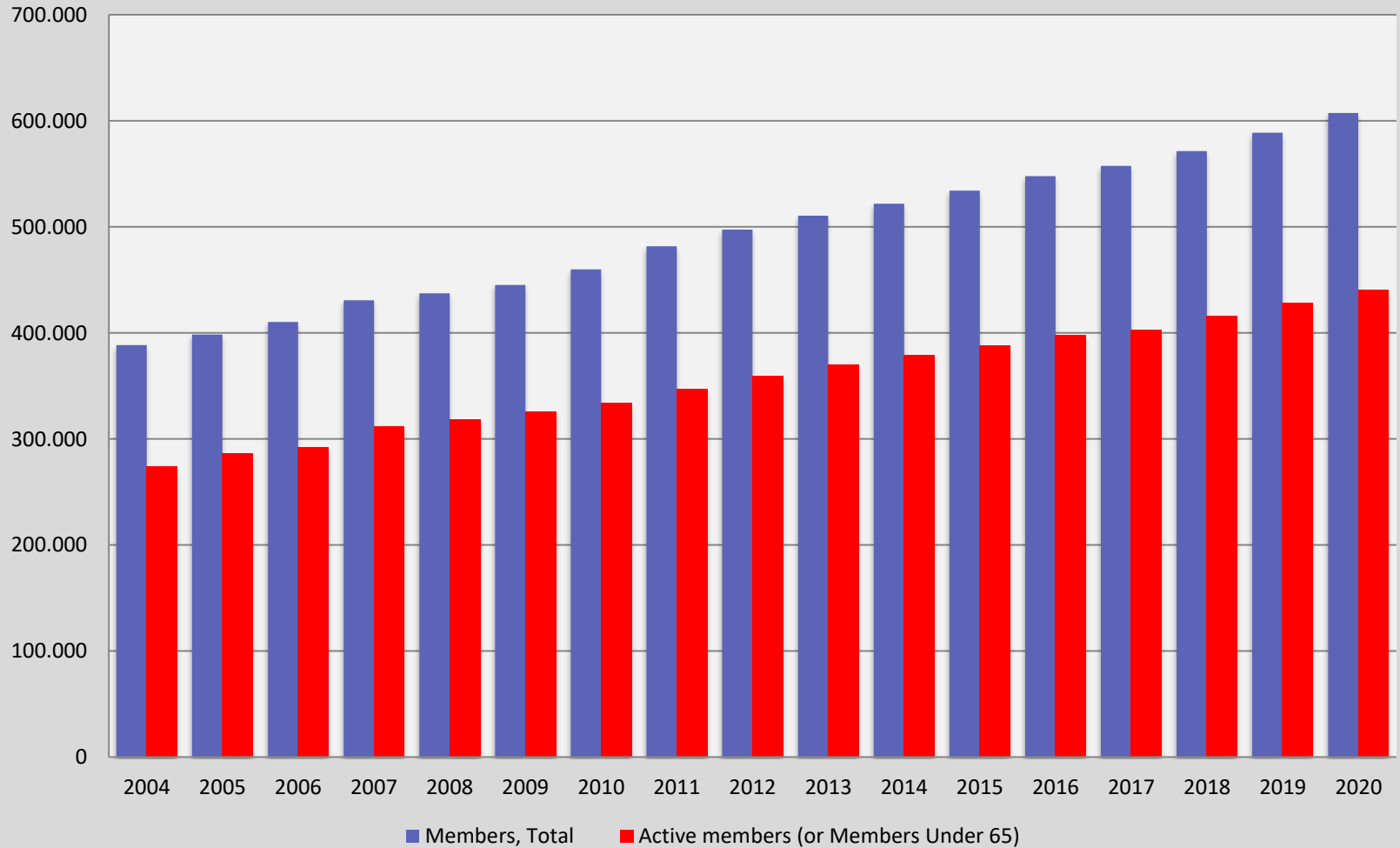


2. NORDING Members by Country 2004-2020





3. NORDING Members 2004-2020





4. Active Members (or Members Under 65)

	Amount 1.1.2020	Annual Change in 2019	Compound Annual Growth Rate (CAGR)* 2010-2019
TEK (FI)	46.628	-0,1 %	1,0 %
IL (FI)	47.860	-2,3 %	1,4 %
DIFF (FI)	1.808	-2,5 %	0,3 %
TFiF (FI)	2.237	-2,6 %	-0,8 %
Total FI	98.533	-1,3 %	1,1 %
SvIng (SE)	127.429	2,0 %	2,0 %
IDA (DK)	83.498	6,5 %	4,5 %
VFÍ (IS)	4.130	9,9 %	6,7 %
NITO (NO)	64.787	1,5 %	2,6 %
TEKNA (NO)	61.937	7,8 %	3,6 %
Total NO	126.724	4,5 %	3,1 %
EIK (EE)	153	0%	2,2 %
TOTAL NORDING	440.467	2,8 %	3,1 %

*CAGR = "Average Annual Change" used in previous presentations.

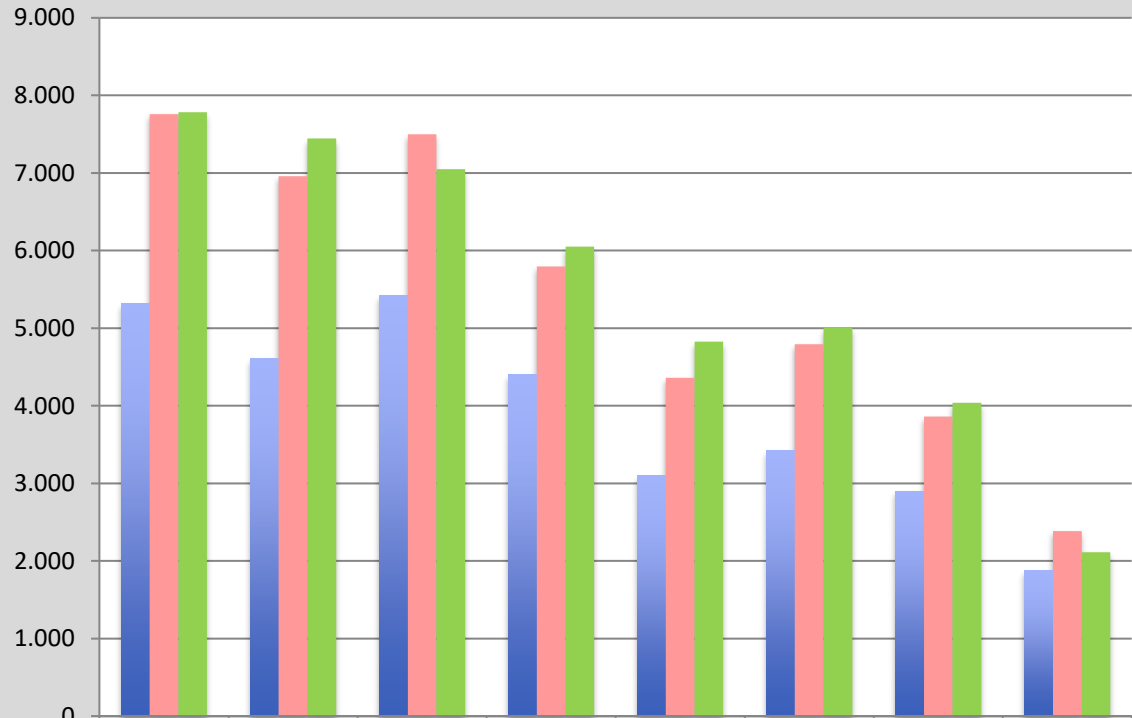


5. Proportion of Women Among Active Members (or Members Under 65)

	1.1.2006	1.1.2020
TEK (FI)	17,2 %	23,4 %
IL (FI)	12,0 %	17,0 %
DIFF (FI)	6,9 %	8,0 %
TFiF (FI)	17,2 %	20,7 %
Total FI	14,5 %	19,8 %
Total SE (SvIng)	20,5 %	27,6 %
Total DK (IDA)	17,0 %	26,0 %
Total IS (VFÍ)	7,0 %	20,7 %
NITO (NO)	22,7 %	24,5 %
TEKNA (NO)	22,0 %	30,8 %
Total NO	22,4 %	27,6 %
Total EE (EIK)	-	12,7 %
TOTAL NORDING	18,4 %	25,5 %



6. Monthly Salary in 2019, EUR Median, Members in Manufacturing (Private Sector)



	IDA (DK)	TEKNA (NO)	VFI (IS)	NITO (NO)	SvIng (SE)	TEK & TFIF (FI)	IL & DIFF (FI)	EIK (EE)
■ Members graduated in 2019	5.321	4.606	5.420	4.408	3.099	3.420	2.900	1.872
■ Members with 10 Years of work experience	7.757	6.960	7.500	5.795	4.359	4.794	3.861	2.387
■ All members	7.782	7.446	7.050	6.050	4.827	5.011	4.037	2.115



Average Annual Change of Monthly Salary 2006-2019

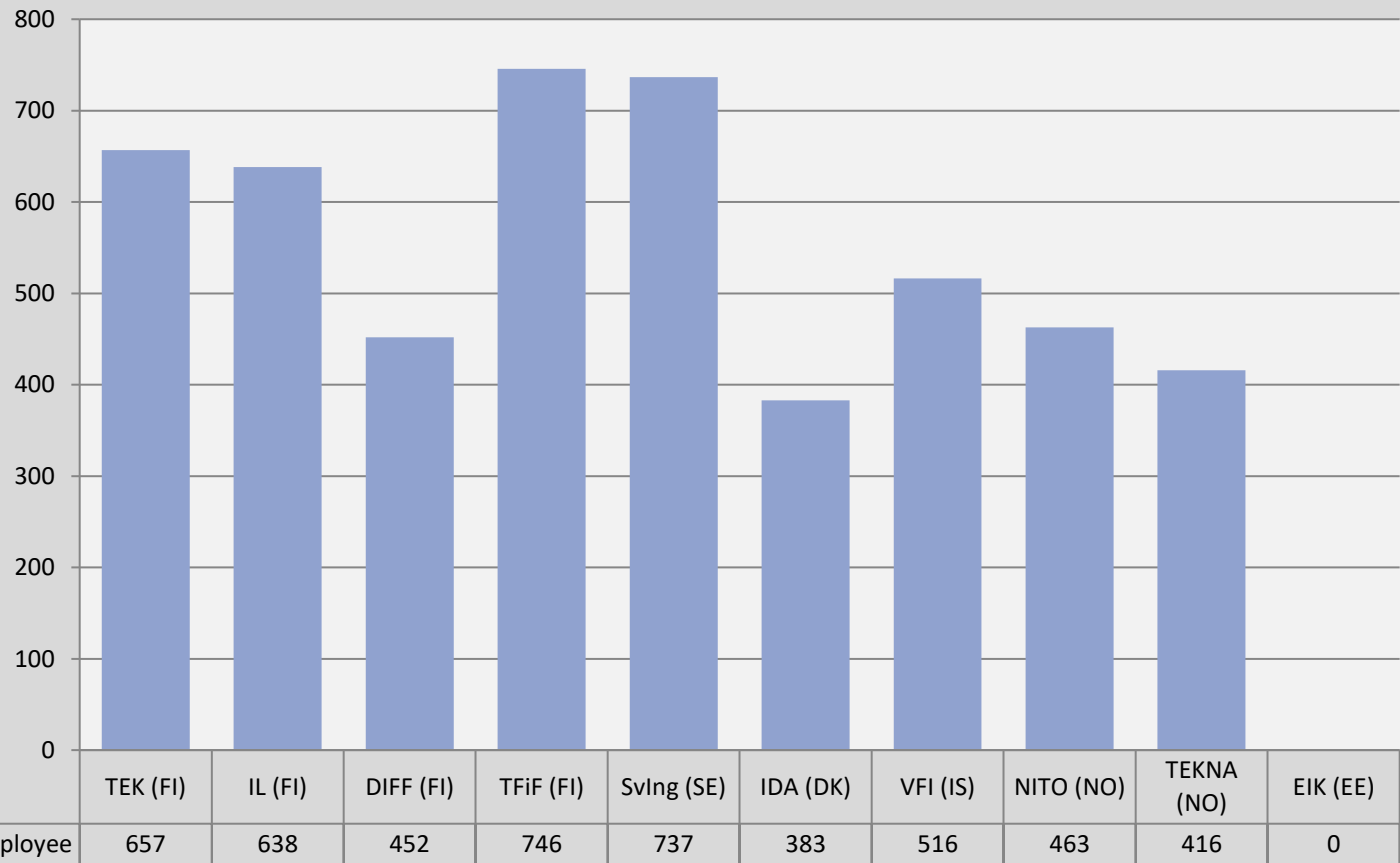
NordIng 2007 / 2020

	Members after graduation	Members with 10 Years of Work Experience	All Members
TEK & TFIF (FI)	1,5 %	0,6 %	1,7 %
IL (FI)	2,0 %	0,6 %	1,3 %
DIFF (FI)	2,3 %	0,1 %	1,1 %
SvIng (SE)	1,4 %	0,5 %	1,2 %
IDA (DK)	2,0 %	2,2 %	2,9 %
VFI (IS)	1,3 %	1,0 %	0,3 %
NITO (NO)	1,9 %	1,9 %	1,8 %
TEKNA (NO)	1,8 %	1,7 %	2,1 %



8. Member – Employee Ratio

Amount of Active Members (or Members under 65) /
Number of Employees on 1 January 2020





9. Unemployment Rate Among Active Members on December 2010-2019

